



TENSIONED COSMOPOLITAN® ELECTROL®

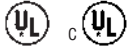
Automatic Electric Projection Screen Model

DA-LITE SCREEN COMPANY, INC.
3100 North Detroit Street
Post Office Box 137
Warsaw, Indiana 46581-0137
Phone: 574-267-8101
800-622-3737
Fax: 574-267-7804
www.da-lite.com
e-mail: info@da-lite.com

SPECIFICATION DATA

FOR SIZES UP TO 10' x 10' (FOR LARGER SIZES, REFER TO ADDITIONAL SPECIFICATION DATA SHEET)

SUGGESTED SPECIFICATIONS: _____ projection screen(s), _____ (H) x _____ (W), electrically operated 120 volt (60 Hz) 2.0 amp. To have Da-Mat, High Contrast Da-Mat, Pearlescent, Cinema Vision, High Contrast Cinema Vision, High Contrast Cinema Perf, Audio Vision, High Contrast Audio Vision, Da-Tex (Rear) or Dual Vision seamless surfaces with black masking borders standard on flame retardant and mildew resistant fabric mounted on 3-3/16" diameter rigid metal roller. Each side of the fabric to have tab guide cable system to maintain even lateral tension and hold surface flat. Custom slat bar with added weight maintains vertical tension on the screen surface. Shall have specially designed motor mounted inside the roller with a patented noise silencer, to be three wire quick reversal type, capacitor and an electric brake to prevent coasting. To have preset but adjustable limit switches to automatically stop picture surface in the "up" and "down" position. Case to be painted black 21-gauge steel, hexagon in shape with flat back to prevent scraping fabric. Finished in black enamel paint. Case end caps to be heavy duty, allowing no exposed roller pins. Caps shall form sturdy brackets for wall or ceiling installation. To be complete with three position control switch with cover plate. Screen to be listed by Underwriters' Laboratories.



All viewing surfaces will be seamless.

All viewing surfaces are standard with black backing except Da-Tex and Dual Vision.

VIDEO FORMAT

Sizes		Nominal Diagonal		Overall Case Length		Between Hanger Eyes		Approx. Shipping Weight	
In.	Cm	In.	Cm	In.	Cm	In.	Cm	Lbs.	Kg
43" x 57"	109 x 145	72"	183	75"	191	73-1/2"	187	61	27.7
50" x 67"	127 x 170	84"	213	86"	218	84-1/2"	215	67	30.4
60" x 80"	152 x 203	100"	254	100"	254	98-1/2"	250	76	34.5
69" x 92"	175 x 234	120"	305	114"	290	112-1/2"	286	85	38.6
87" x 116"	221 x 295	150"	381	141"	358	139-1/2"	354	104	47.2

HDTV FORMAT

Sizes		Nominal Diagonal		Overall Case Length		Between Hanger Eyes		Approx. Shipping Weight	
In.	Cm	In.	Cm	In.	Cm	In.	Cm	Lbs.	Kg
45" x 80"	114 x 203	92"	234	98-1/2"	250	97"	246	67	30.4
52" x 92"	132 x 234	106"	269	111"	282	109-1/2"	278	74	33.6
54" x 96"	137 x 244	110"	279	115-1/2"	293	114"	290	77	34.9
58" x 104"	147 x 264	119"	302	124"	315	122-1/2"	311	85	38.6
65" x 116"	165 x 295	133"	338	137"	348	135-1/2"	344	104	47.2
78" x 139"	198 x 353	159"	404	162"	411	160-1/2"	408	122	55.3

SQUARE FORMAT

Sizes		Overall Case Length		Between Hanger Eyes		Approx. Shipping Wt.	
In.	Cm	In.	Cm	In.	Cm	Lbs.	Kg
50" x 50"	127 x 127	69"	175	67-1/2"	172	56	25.4
60" x 60"	152 x 152	80"	203	78-1/2"	199	63	28.6
70" x 70"	178 x 178	91-1/2"	232	90"	229	70	31.8
84" x 84"	213 x 213	108"	274	106-1/2"	271	78	35.3
6' x 8'	183 x 244	118"	300	116-1/2"	296	85	38.6
8' x 8'	244 x 244	121-1/2"	309	120"	305	87	39.5
7' x 9'	213 x 274	132"	335	130-1/2"	332	89	40.4
9' x 9'	274 x 274	130-1/2"	331	129"	328	92	41.7
8' x 10'	244 x 305	145-1/2"	370	144"	366	104	47.2
10' x 10'	305 x 305	142-1/2"	362	141"	358	112	50.8

Extra drop may alter dimensions. Contact Da-Lite for details.

Overall case length dimensions $\pm 1/4$ ".

Specifications subject to change without notice.

All screens standard with 12" black drop at the top.

Letterbox formats and custom sizes available upon request.

WHEN ORDERING, MARK APPROPRIATE SELECTIONS:

Select size from charts on the other side.

Select viewing surface:

- Da-Mat
- Cinema Vision
- Da-Tex (Rear)
- High Contrast Da-Mat
- High Contrast Audio Vision
- Pearlescent
- Audio Vision
- Dual Vision
- High Contrast Cinema Vision
- High Contrast Cinema Perf

Options:

- Single Motor Low Voltage Control (LVC).
- Wireless Remote Control for LVC.
 - Radio Frequency Remote.
 - Infrared Remote.
- Locking Switch Cover Plate for 120V or LVC Switch.
- Key Operated Switch for 120V only (NOTE: Cannot be used with LVC).
- 220 Volt (50 Hz) Motor.
- Video Projector Interface Control - 12V or 5V.
- Floating Mounting Bracket.
- No. 6 Wall Bracket – 6" extension, non-adjustable.
- Ceiling Trim Kit.

Project: _____

Architect: _____

Phone: _____

Contractor: _____

Phone: _____

Supervisor: _____

Phone: _____

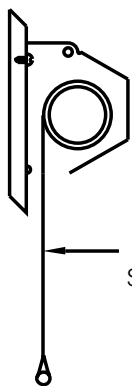
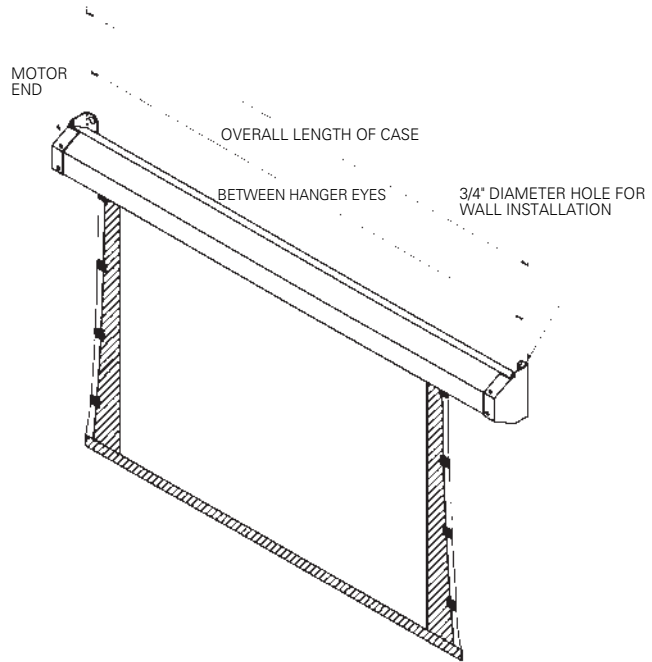
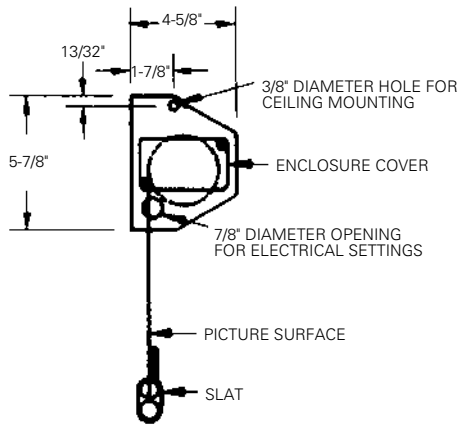
Date: _____

Revised: _____

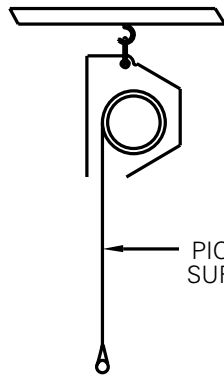
- External SCB-100 - RS-232 Serial Control Board
- NET-100 Ethernet-Serial Adapter

TENSIONED COSMOPOLITAN® ELECTROL®

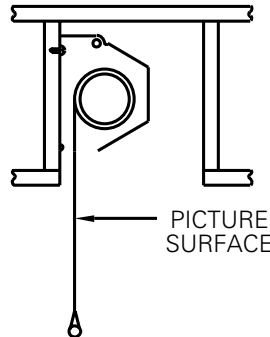
SUGGESTED METHODS OF INSTALLATION



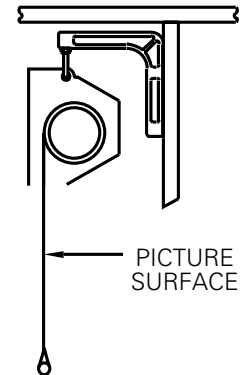
WALL MOUNTED



CEILING MOUNTED



CONCEALED



USE No. 6 BRACKETS TO HANG BEHIND BEAM OR VALANCE