

PJ-Net Manager Ver. 1.0

Owner's manual

SNMP Manager software

Chapter 1 Introducing

Introducing

This PJ-Net Manager is a SNMP manager software for the network equipment which supports the private MIB (Management Information Base).

By installing the PJ-Net Manager to the computer, you can monitor the equipment simply such as the projector, the rear projection monitor and the PDP monitor connected to the network.

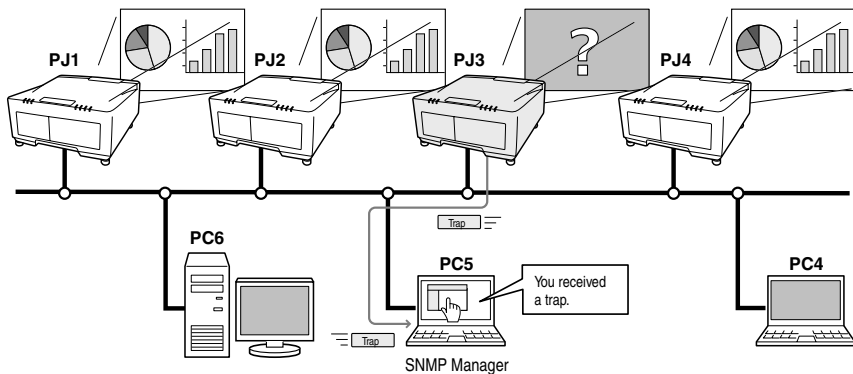
* The PJ-Net Manager can handle our products provided with the network board which has a SNMP agent function.

SNMP

SNMP is an abbreviation for Simple Network Management Protocol.

On the TCP/IP network, it is the protocol to monitor and control the equipment connected to the network.

SNMP realizes the management function by reading and changing the management information called MIB with SNMP protocol between the manager (management equipment) and agent (controlled equipment) which are connected with TCP/IP network.



Trademarks

PJ-Net Manager is a trademark of Sanyo Electric Co. Ltd. Microsoft, Windows, Windows 2000, Windows XP are registered trademarks of Microsoft Corporation. Other products or brand names in this manual are registered trademarks or trademarks of their respective owners.

* Unauthorized use of a part or whole of the contents in this manual is prohibited.

* The contents of this manual are subject to change without notice.

Contents

Chapter 1 Introducing	2
Introducing.....	2
SNMP	2
Trademarks	2
Operating Environment.....	4
Chapter 2 Set up	5
PJ-Net Manager installation.....	6
PJ-Net manager un-installation	6
Chapter 3 Basic Operation	7
Launching and quitting PJ-Net Manager	8
Name of status window.....	8
Quitting PJ-Net Manager	9
Menu tree	9
Name of the button on the tool bar	10
Icon display for the target	10
Addition of the target.....	11
Editing the target	11
Deletion of the target.....	11
Setting up the warning value	12
Starting target monitoring.....	12
When happening the alert on the target.....	13
When happening the trap event on the target.....	13
What's Trap	13
Stopping monitoring the target.....	14
Displaying all the status information of the target	14
Setting up default setting	15
Customizing the status list	17
Viewing the alert information	20
Viewing the event log	21
Description of Event, Type, Warning column, Warning value	22
About event treatment.....	24
Saving the management file	26
Information saved to the registry	26
Login to the target equipment	27

Operating Environment

Item	Minimum	Recommended
CPU	Pentium III 400MHz or higher	Premtium 4 2.0GHz or higher
Memory	128MB or higher	256MB or higher
HDD	More than 20MB of free disk space	
Screen resolution	SVGA (16 colors or more)	XGA True color or more
LAN	10Mbps or more	100Mbps or more
OS	Windows 2000 Professional +SP4 Windows XP Home Eddition +SP1 Windows XP Professional+SP1	Windows XP Professional +SP2

Limited condition

The number of agents monitored is up to 200.

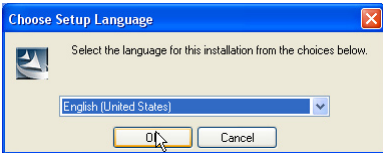
Chapter 2

Set up

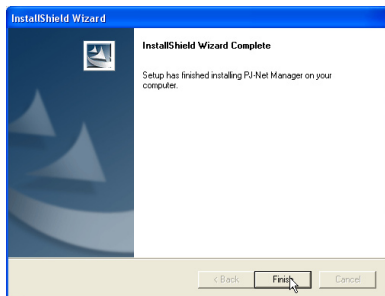
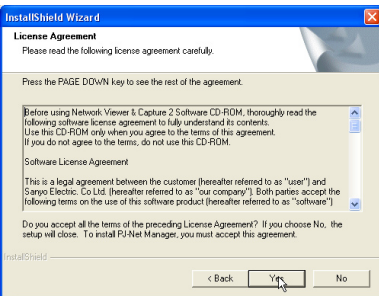
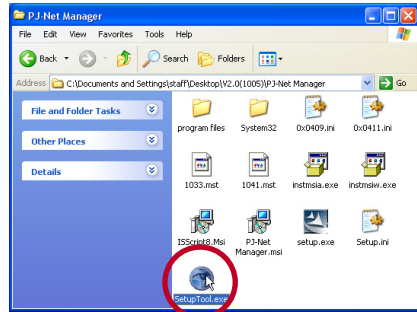
2

PJ-Net Manager installation

- 1 Set the supplied CD-ROM into the CD-ROM drive of your computer. Double click **SetupTool.exe** icon in the "PJ-Net Manager" folder in the CD-ROM.
- 2 Select "[English [United States]]" from the pull-down menu on the "Choose Setup Language" window and click **OK** button to start installing and then follow the installation wizards.



As the "Software License Agreement" will appear, read contents carefully and click **Yes** button if you agree the license agreement to proceed with installing.



Note:

To install the software into the computer with Windows 2000 or Windows XP, you should logon as administrator. Before installation, make sure that the other applications are closed, otherwise proper installation cannot be made.

PJ-Net manager un-installation

To remove the PJ-Net Manager software from your computer, perform it with "Add & Delete Application" on the control panel.

Chapter 3

Basic Operation

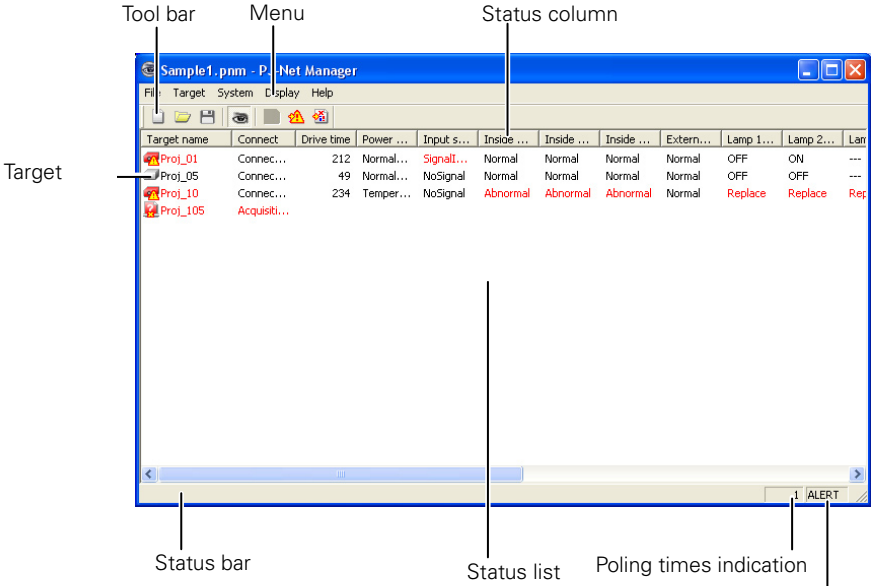


Launching and quitting PJ-Net Manager

To launch PJ-Net manager, take one of the following.

- Select "PJ-net Manager" from the menu "Start" - "All programs".
- Double click a management file*1.

Name of status window



* When double clicking the target name, the web browser is launching and displays login widow of the target. (p.27)

Items	Description
Menu.....	Executes a command with menu selection
Tool bar.....	Executes a command assigned to a button.
Target.....	Network equipment for monitoring.
Status bar.....	Indicates the status of PJ-Net Manager and explaining the command selected with cursor.
Status list.....	Indicates the status of targets monitoring. When some errors are detected, the target name, icon and error items are indicated with red.
Status column.....	Column of status list.
Poling times indication	Indicates the times of polling during the monitoring.
Event indication	Indicates the event (ALERT, TRAP, SYSERR) when the event happened.

*1 The file which the Monitor target information and event log information are stored. Refer to item "Storing Management file" (p.26) for further details.

[Note]

* The PJ-net manager cannot open multiple status windows at the same time.

Quitting PJ-Net Manager

To quit the PJ-Net Manager, click the close box on top right of the status window, or select "Exit" from the "File" menu

Menu tree

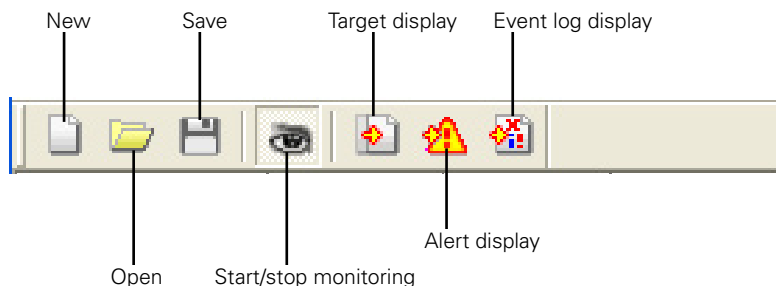
Menu	Sub menu	Operation
File	New	Creates a new management file.
	Open	Opens an existing management file.
	Save	Saves the active management file.
	Save As	Saves the active management file with a new file name.
	Exit	Quits the application.
Target	Target monitoring	Starts or stops target monitoring.
	Target addition	Adds a new target. Target information window will appear.
	Target editing	Edits selected target information.
	Target deletion	Deletes the selected target.
	Warning value set up	Sets up the warning value of the selected target.
System	System default setting	Set up the default setting (monitoring information, e-mail information).
	Column selection	Selects display items on the status list.
	Font setup	Sets up display font type and size on the status list.
Display	Target display	Displays selected target information.
	Alert display	Displays all of alert information on the status list.
	Event log display	Displays all the event logs
	Tool bar	Switches tool bar on or off.
Help	Version information	Displays version of software.

What's Target


Target is the network equipment which provides an SNMP agent function .

Name of the button on the tool bar

The following commands are assigned to the buttons on the tool bar.








Button	Operation
New	Creates a new management file.
Open	Opens an existing management file.
Save	Saves the active management file.
Target monitoring	Starts or stops target monitoring.
Target display	Displays selected target information.
Alert display	Displays all of alert information on the status list.
Event log display	Displays all the event logs

 To switch tool bar display on or off, select "Tool bar" from "Display" menu.

Icon display for the target

Displays icon according to the target condition.

Icon	Condition
 Proj_05	Normal
 Proj_05	Abnormal condition (One of the abnormalities, Alert, Trap or System error is happening on the target.)
 Proj_100	Connection error (Target has been disconnected from the network)
 Proj_100	Acquisition error (Target has been disconnected from the network, or does not provide SNMP function.)
 Proj_100	Unknown (Target monitoring is not operating)

Addition of the target

1 Select **Target Addition** from **Target** menu. The target information registering window appears.

Items	Description
Name	Enter a management name of the target equipment.
IP address	Enter IP address of the target equipment.
Community	Enter a community name in the network. Default name is "public".
System information .	Displays information set on the network equipment

2 Enter target information and click **Update** button. The information set on the target equipment are displayed on the system information items.

☞ When the target equipment is not operating, or it is not the monitoring equipment, the error dialog "Cannot get the information" will appear.

3 Click **OK** to close the window. Repeat the above steps to register for other equipment which is to be managed.

Editing the target

1 Select a target name to edit on the status list with right click.

2 Select **Target editing** on the popup menu. The target information window will appear and edit the contents, then click **OK** button.

☞ The system information cannot be edited.

☞ Target editing can be executed by selecting **Target editing** from **Target** menu.

Deletion of the target

1 Select a target name to delete on the status list with right click.

2 Select **Target deletion** on the popup menu. The confirmation dialog will appear and click **Yes** button to execute deleting.

☞ Target deletion can be executed by selecting **Target deletion** from **Target** menu.

☞ It cannot perform the target addition, editing and deletion during the target monitoring.

☞ Up to 200 targets can be registered.

☞ Up to 127 characters can be used for target name and community.

Setting up the warning value

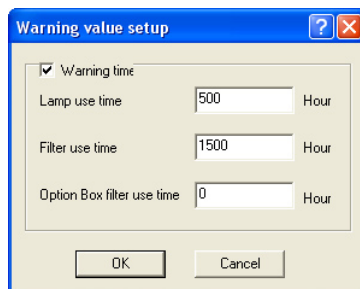
The threshold value of lamp use time, filter use time and option box filter use time are set up with this procedure. When it reaches a setting time, the alert will be displayed on the status list.

1 Select a target on the status list with right click.

☞ When setting multiple targets together, select targets with pressing "Shift" or "Control" key.

2 Select **Warning set up** on the popup menu. The setting window will appear as the right.

3 Check **Warning time** check box and enter the threshold value of lamp use time, filter use time and option box filter use time respectively, the click **OK** button.




☞ To disable the warning value, clear **Warning time** check box.

☞ When selecting multiple targets, the value set to the lowest target on the status list is displayed as the current setting time.

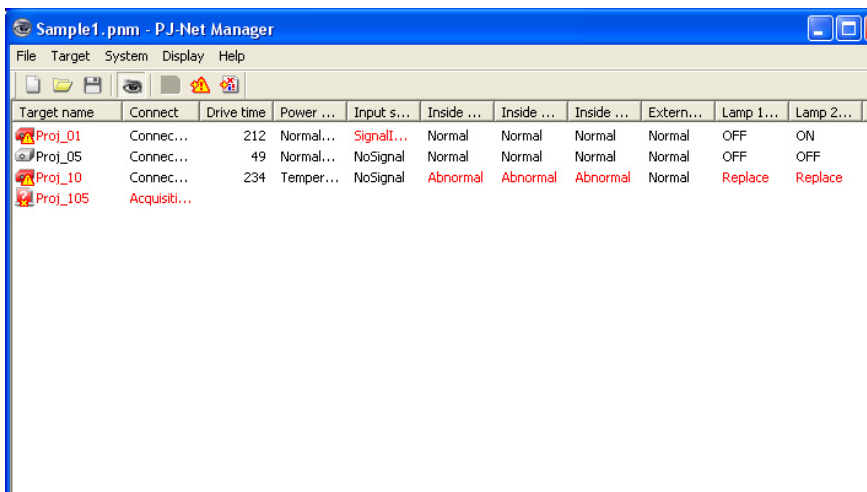
☞ Up to 99,999 hours can be set for the use time.

☞ The warning value is stored in the management file.

Starting target monitoring

1 Click  button on the tool bar to start monitoring the target.

2 PJ-Net manager starts polling the target in a sequential from the top of the status list and displays its results on the status list.



When happening the alert on the target

If the abnormality or connection error happens on the target, PJ-Net Manager indicates target name, icon and status column item with red color to let you know the abnormality.

- ☞ When PJ-Net manager cannot acquire the MIB information of the target equipment, it indicates as Connection Error.
- ☞ The interval of target monitoring is according to the setting of **Monitor interval** on **System default setting** from **System** menu.

Target name	Connect	Drive time	Power ...	Input s...	Inside ...	Inside ...	Inside ...	Extern...
Proj_01	Connec...	212	Normal...	SignalI...	Normal	Normal	Normal	Normal
Proj_05	Connec...	49	Normal...	NoSignal	Normal	Normal	Normal	Normal
Proj_10	Connec...	234	Temper...	NoSignal	Abnormal	Abnormal	Abnormal	Normal
Proj_105	Acquisiti...							

When happening the trap event on the target

During the target monitoring, if the predefined event (trap) happens on the target equipment, the target sends the trap information to PJ-Net Manager. This trap information is displayed on the status list immediately.


The notify of the trap information is set up in the SNMP setting items of the target equipment. Projector has items such as "When PJ lamp is off", "When the life span of lamp is reached", "When internal PJ power circuit is failed" etc. For further trap information, refer to SNMP trap information in the owner's manual of the network board.

Target name	Connect	Drive time	Power ...	Input s...	Inside ...	Inside ...	Inside ...	Extern...
Proj_01	Connec...	212	Normal...	SignalI...	Normal	Normal	Normal	Normal
Proj_05	Connec...	49	Normal...	NoSignal	Normal	Normal	Normal	Normal
Proj_10	Connec...	234	Temper...	NoSignal	Abnormal	Abnormal	Abnormal	Normal
Proj_105	Acquisiti...							


What's Trap

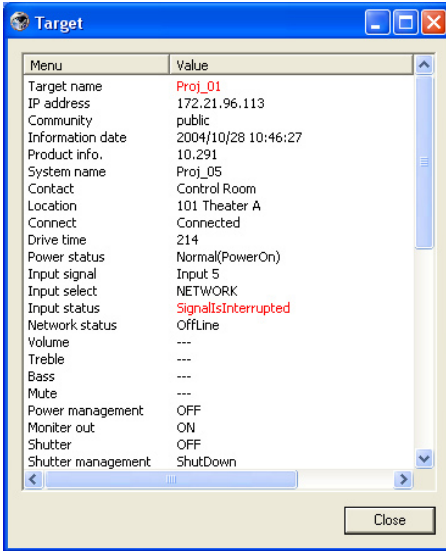
Trap is the event predefined by the SNMP agent. If the predefined event ("When PJ lamp is off", "When internal PJ power circuit is failed" etc.) happens, target sends trap information to the SNMP manager.


Stopping monitoring the target


To stop monitoring the target, click  button again on the tool bar.


Displaying all the status information of the target

Select a target and click  button on the tool bar. The following status window will appear and displays all the status information of the target



 The target name and item which has an abnormality or connection error happens are indicated with red.

 When PJ-Net manager cannot acquire the column information, the value is displayed by "---".

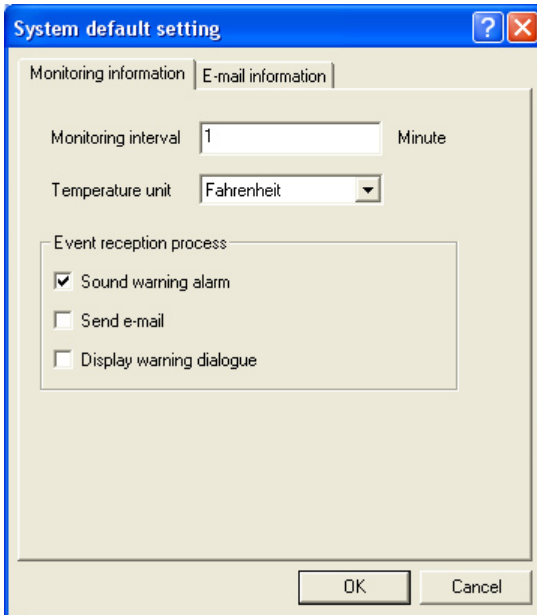
 The above procedure can perform by selecting Target display from Display menu.

Setting up default setting

The monitoring information and e-mail information can be set up by the procedure below.

- 1 Select **System default setting** from **System** menu. The setting window will appear.
- 2 Switch by clicking **Monitoring information** or **E-mail information** tab for each setting.

Monitoring information

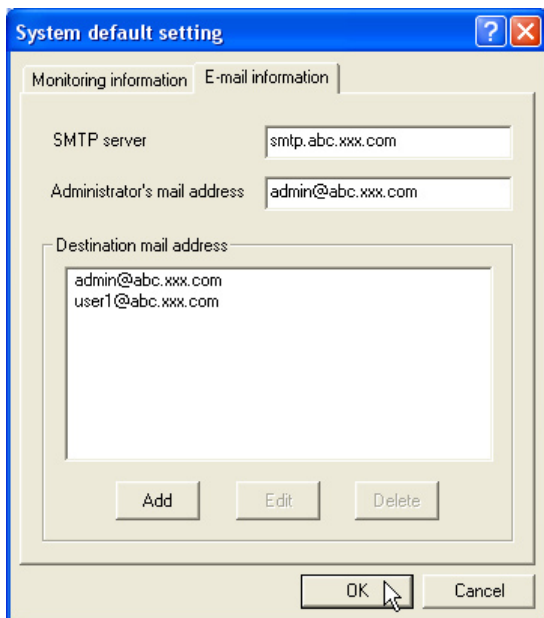


Monitoring information

Items	Description
-------	-------------

Monitoring interval	Sets up the interval of the polling in minute unit. (1 to 99 minutes can be set)
Temperature unit.....	Sets up the display temperature unit Centigrade or Fahrenheit.
Event reception process..	Sets up the treatment when the event (ALERT, TRAP, SYSERR) happens on the target. For further information, refer to item "About event treatment" (p.21).
	<input checked="" type="checkbox"/> Sound warning alarm
	<input type="checkbox"/> Send e-mail
	<input type="checkbox"/> Display warning dialogue

E-mail information



E-mail information

Items	Description
-------	-------------

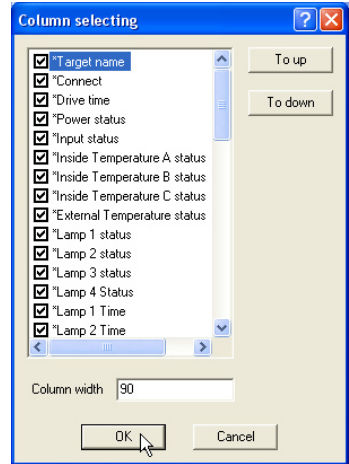
SMTP server	Sets up the IP address of SMTP mail server or server host name.
Administrator's mail address	Sets up the e-mail address of administrator
Destination mail address	Sets up the destination mail address when the event (ALERT, TRAP, SYSERR) happens on the target. The mail address entering window appears when clicking Add button.

- ☞ If Send e-mail check box of **Event reception process** on **Monitor information** is un-checked, the alert e-mail will not be sent even if you set up the e-mail address.
- ☞ Up to 10 addresses can be set up for the destination mail address.
- ☞ For the contents of the mail, refer to item "About event treatment" (☞p.24).

Customizing the status list

Changing the status column indication

- 1 Select **Column selection** from **System** menu. The column selection window will appear.
- 2 On the window, check the column name to be indicated on the status list.
 - ☞ The mark [*] next to the column name indicates alert item.
- 3 To change order of the display column on the status list, select column you intend to change order and click **To up** or **To down** button.
- 4 Click **OK** to close setting.



Column	Description
*Target name	Name of the network equipment
*Connect	Status of connection to the network (Connected, Un-connected)
*Drive time	Accumulated use time of the equipment
*Power status	Power status of the equipment (Normal(Power-on), Normal(Standby), Power Management, Power failure, lamp failure, etc.)
*Input status	Input signal status (Signal, No signal, Signal interrupted)
*Inside Temperature	
A status	Status of inside temperature A (Normal, Warning, Error)
*Inside Temperature	
B status	Status of inside temperature B (Normal, Warning, Error)
*Inside Temperature	
C status	Status of inside temperature C (Normal, Error)
*External Temperature	
status	Status of external temperature (Normal, Warning, Error)
*Lamp1 status	Status of Lamp1 (Off, On, Error, Replace)
*Lamp2 status	Status of Lamp2 (Off, On, Error, Replace)
*Lamp3 status	Status of Lamp3 (Off, On, Error, Replace)
*Lamp4 status	Status of Lamp4 (Off, On, Error, Replace)
*Lamp1 Time	Use time of Lamp1
*Lamp2 Time	Use time of Lamp2
*Lamp3 Time	Use time of Lamp3
*Lamp4 Time	Use time of Lamp4
*Filter status	Status of airfilter (Normal, Clogged)
*Option Box	
filter status	Status of option box filter (Normal, Error, Clogged)
*Filter time	Use time of airfilter
*Option Box	
filter time	Use time of option box filter
*Error info	Error information (Not available for the projector)

☞ There are some available items depending on the equipment.

☞ The [*] next to the column name indicates alert item.

Column	Description
Input signal	Information of the input mode (Input1, Input2, etc.)
Input select	Information of the input source (RGB, VIDEO, S-VIDEO, NETWORK, etc.)
Network status	Condition of the network mode (Off line, Network Viewer, Network Capture)
Inside Temperature A.....	Displays inside temperature A of the equipment (in Centigrade or Fahrenheit)
Inside Temperature B.....	Displays inside temperature B of the equipment (in Centigrade or Fahrenheit)
Inside Temperature C	Displays inside temperature C of the equipment (in Centigrade or Fahrenheit)
External Temperature	Displays external temperature of the equipment (in Centigrade or Fahrenheit)
Lamp mode.....	Displays lamp mode (1: 1-lamp mode, 2: 2-lamp mode, 4: 4-lamp mode)
Lamp control.....	Displays lamp control mode (Auto, Normal, Eco)
Model name.....	Model name of the network equipment
IP address	IP address of the network equipment
Community	Community name of the network equipment (public)
Introduction date*1	Date of the network equipment installed
Product info.....	Name of the network equipment (PJ-Net)
System name.....	System name of the network equipment (Proj_05)
Contact	Contact information of the network equipment
Location	Installed location of the network equipment
Volume.....	Sound Volume of the network equipment (0 ~ 63)
Treble	Sound treble of the network equipment (-15 ~ 15)
Bass.....	Sound bass of the network equipment (-15 ~ 15)
Mute.....	Sound mute status of the network equipment (ON, OFF)
Power management.....	Power management status of the network equipment (OFF, READY, SHUTDOWN)
Monitor out.....	Monitor out status of the network equipment (ON,OFF)
Shutter	Shutter status of the network equipment (OFF, High-Contrast, Normal)
Shutter management	Shutter management status of the network equipment (Shutdown)
Fan control.....	Fan control status of the network equipment (Normal, Maximum)

*1 Set up the installed date when the PJ-Net Manager is newly introduced.

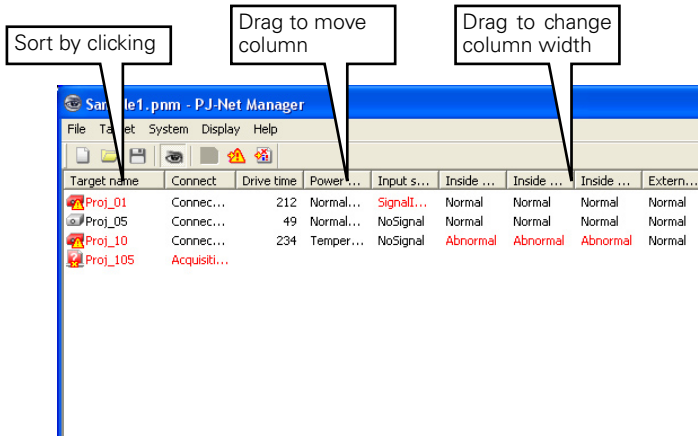
*2 There are some un-available columns depending on the products. The un-available columns are displayed with "---".

To change order or width of the column

Drag the status column name you want to change order and move it on a new place and drop it. To change column width, set a mouse cursor onto the right edge of the column to change, drag mouse on it and adjust the column width.

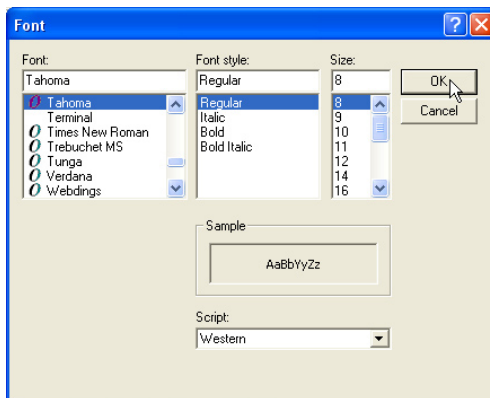
Sorting the status list

The order of the targets on the status list can be changed by clicking the column name which you want to sort. It switches ascending or descending order by clicking the column name each time.




Changing font

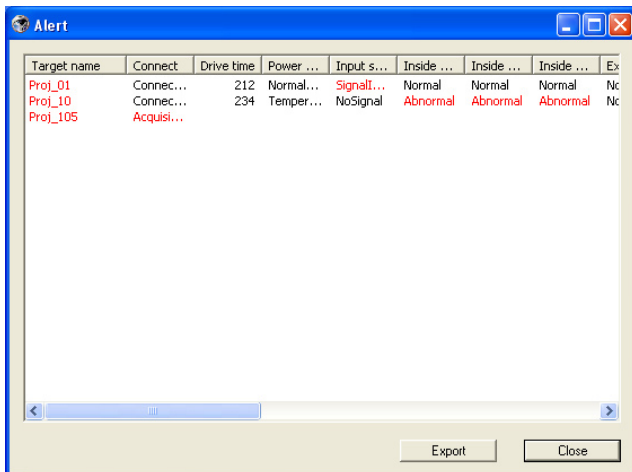
Select **Font setup** from System menu. The font setup window will appear. Select your desired font face, style and size on the window.



Customized font property is applied to all the windows of the setting.


Viewing the alert information

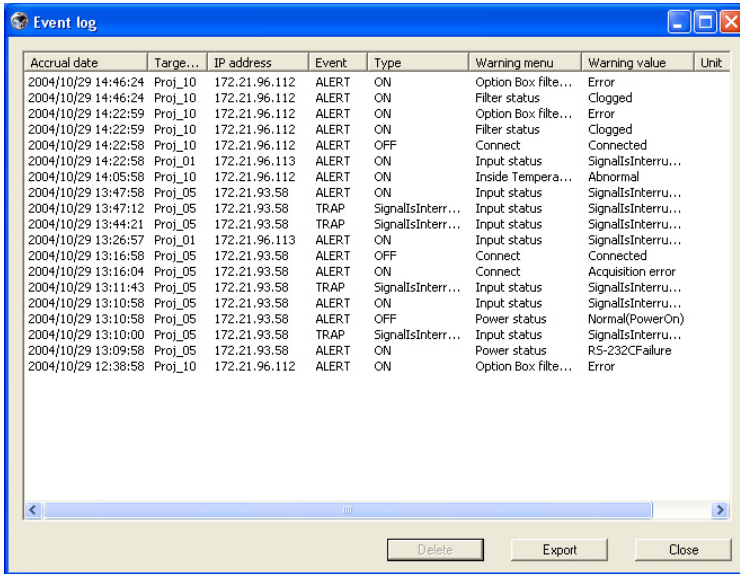
- 1 Click  button on the tool bar. The alert display window will appear and the alert information of all the targets which are having an alert is listed on this window as the below.
- 2 To export the alert information as text file (CSV file), click **Export** button.



- ☞ Only the alert columns are listed. (p.17)
- ☞ The list order is the same as the status list order and it cannot be sorted.
- ☞ Column width can be changed with dragging the right edge of the column. The column order can be changed with drag and drop the column. Column can not be deleted.

Viewing the event log

- 1 Click  button on the tool bar. The event log display window will appear and the events which have been happened on the targets are listed on this window as the below.
- 2 To export these events as text file (CSV file), click **Export** button.
- 3 To delete the event log, select the accrual date item you intend to delete by clicking and then click **Delete** button. On the confirmation dialogue, click **Yes** to execute deletion.



Event log information items

Items	Description
-------	-------------

Accrual dateAccrual date of the event

Target nameName of the network equipment


IP addressIP address of the network equipment


EventType of the Event (ALERT, TRAP, SYSERR) (See table on the next page)


TypeType of the Event (See table on the next page)

Warning columnWarning column of the Event (See table on the next page)

Warning value ...Warning value of the Event (See table on the next page)

 The listed items are fixed.

 The order of the event log list can be changed temporarily by clicking the column name which you want to sort. It switches ascending or descending order by clicking the column name each time.

 Column width can be changed with dragging the right edge of the column. The column order can be changed with drag and drop the column. Column cannot be deleted.

Description of Event, Type, Warning column, Warning value

Event	Type	Warning Column	Warning Value	Description
ALERT	ON : Abnormality has happened OFF : Abnormality has been cleared	Connect	Un-connected Connected Acquisition error	* Refer to the next page
		Power status	PowerFailuer TemperatureError(OnCoolingDown) TemperatureError NormalAfterTempError RS232CFailure Power management(OnCoolingDown) Power management Shutter management(On cooling) Shutter management LampFailure(OnCoolingDown) LampFailure	
		Input status	SignallsInterrupted SignallsInputed	
		Inside Temperature status (A to C) External Temperature status	Abnormal	
		Lamp status (1 to 4)	Failure Replace	
		Lamp time (1 to 4)	(setting time)	
		Filter status	Clogged	
		Filter time	(setting time)	
		Option Box filter status	Clogged Error	
		Option Box filter time	(setting time)	
		TRAP	LampFailure	
LampReplace	Replace			
PowerOFF PowreFailure PowerManagement ShutterManagement	Power status		Normal(Standby) Normal(OnCoolingDown) PowerFailuer Power management Shutter management	
TemperatureError	Inside Temperature status (A to C) External Temperature status		Abnormal	
SignallsInterrupted	Input status		SignallsInterrupted	
LampReplacementTime	Lamp time (1-4)		(lamp time)	
FilterReplacementTime	Filter time		(filter time)	
CloggedFilterWarning	Filter status		Clogged	
OptionBoxFilterReplacementTime	Option Box filter time		(filter time)	
CloggedOptionBoxFilterWarning	Option Box filter status		Clogged	
OptionBoxError			Error	
AutoPlayError	n/a	Error		
SYSERR	*MailError *MemoryError	n/a	n/a	

☞ For further details of each warning column and value, refer to the next page.

Description of warning value

Warning Column	Warning Value	Description
Connect	Un-connected Connected Acquisition error	Projector has been disconnected from the network Projector has been connected to the network PJ-Net Manager could not acquire the MIB information from the equipment
Power status	Power failuer	Projector turned off due to the power failure of the projector
	TemperatureError(OnCoolingDown)	On Cooling down due to temperature error occurred
	TemperatureError	The projector turned off due to temperature error occurred
	NormalAfterTempError	Normal after temperature error occurred
	RS232CFailure	The RS-232C communication error occurred
	Power management(OnCoolingDown)	Cooling down after projector lamp was off with the power management function
	Power management	The power management function turned projector lamp off
	Shutter management(On cooling)	Cooling down after projector lamp was off with the shutter management function
	Shutter management	The shutter management function turned projector lamp off
	LampFailure(OnCoolingDown)	Cooling down after the lamp failure occurred
	LampFailure	The lamp failure occurred
Normal(Standby)	Projector turned into standby normally	
Normal(OnCoolingDown)	On cooling down normally due to projector turned off	
Input signal status	SignalsInterrupted SignalsInputed	The signal was interrupted The signal was inputted again
Inside Temperature status (A to C) External Temperature status	Abnormal	The projector turned off when the temperature was abnormally high
Lamp status	OFF Failure Replace	When the projector was turned off with power ON/OFF button When the lamp was off It reached lamp replacing time.
Lamp time	(lamp time)	It reached user setting lamp replacing time
Filter status	Clogged	Filter was clogged
Filter time	(filter time)	It reached user setting filter time
Option Box filter status	Clogged Error	Filter was clogged The option box filter had an abnormality
Option Box filter time	(filter time)	It reached user setting option box filter time
(Auto play error)	Error	The error occurred during the auto image display
(Mail error) (System error)	n/a	PJ-Net Manager could not send mail PJ-Net Manager could not acquire the memory

- ☞ The column order and width of the event log window are saved to the registry of the computer.
- ☞ Up to 1000 of events can be handled. If it exceeds 1000 events, the oldest event is deleted and the latest event is added. The event log can be saved to the management file.

About event treatment

If the PJ-Net Manager receives an event, it executes following event treatment items which are selected in the system default setting.

- Sound warning alarm
- Send e-mail
- Display warning dialogue

Sound warning alarm

If the PJ-Net Manager receives an event, the computer beeps an alarm sound. The alarm sound is depending on your computer sound setting.

☞ The alarm sound is not reproduced when your computer does not provide any speaker or the sound volume is muted.

Send e-mail

Following example message is sent to the e-mail address you set up as the destination mail address.

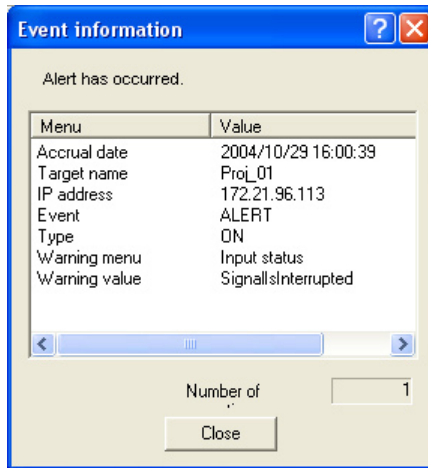
```
From: Test1 <admin@abc.xxx.com>
(management file name)
Date : 2004/10/29 21:30
To : user@abc.xxx.com
Subject : Alert message
-----
Alert has occurred
* Accrual date : 2004/10/29 21:13:42
* target name : Proj_10
* IP address : 192.168.1.101
* Event : ALERT
* Type : ON
* Warning item : Power status
* Warning value : Power failure
```

☞ For further information of event, type, warning column and warning value, see item "Viewing event log" (☞p.21).

☞ The setting of event treatment, refer to item "Setting of default setting" (☞p.15).

Display warning dialogue


Following dialogue window appears on the screen if event occurs.



For further information of event, type, warning column and warning value, see item "Viewing event log" (p.21).


Saving the management file

When you monitor the network equipment with the PJ-Net manager, you can save the registered target information, system setting and event log information into the management file with a free file name. It is useful if you manage multiple equipment in the network.

Click  button on the tool bar and save it with free file name. The extension is ".pnm".

The management file contains following information.

Items	Description
Header.....	Management file section, file version
System default setting.....	Default value of the system setting - Monitoring interval - Event reception process - Temperature unit - E-mail information
Target information.....	Information of the registered target - Target information (target name, IP address, Community, Introduced date) - target MIB information - Warning value set up
Event log information.....	Event log information (ALERT, TRAP, SYSERR)

 The maximum volume of a management file is required about 1MB. (Number of registrable targets is 200, number of events is 1000)

Information saved to the registry

Following application setting information is saved to the registry of your computer. So the setting condition is memorized even if quitting the application.

Items	Description
Status window information.....	Display position and size of the status list window
Status list information.....	Display status column, column width and column order
Event log list information	Column width and order of the event log list
Font set up	Font setting value (Type face, size and style)

Login to the target equipment

When double clicking the target name on the status list, the computer launches web browser and displays the login window of the target equipment.

You can control and set up the projector remotely by using the web browser. For further information of instruction, see owner's manual of the network board.

Login by double clicking

The PJ-Net Manager window displays a table with the following data:

Target name	Connect	Drive time	Power ...	Input s...	Inside ...	Inside ...	Inside ...	Extern...	Lamp 1...	Lamp 2...	Lan
Proj_01	Connec...	212	Normal...	Signal...	Normal	Normal	Normal	Normal	OFF	ON	---
Proj_05	Connec...	49	Normal...	NoSignal	Normal	Normal	Normal	Normal	OFF	OFF	---
Proj_10	Connec...	234	Temper...	NoSignal	Abnormal	Abnormal	Abnormal	Normal	Replace	Replace	Rep
Proj_10S	Acquisiti...										

The Microsoft Internet Explorer window shows the address <http://172.21.93.58/> and the login page content:

```

ADVANCED NETWORK
Standard mode
Light mode
ADVANCED NETWORK
  
```

Example of the network board login page

